



Blueway # 17

Wambaw Creek

www.BerkeleyOutdoorLife.com





Convenient Functionality Built into This Guide

Map 1 of 2 - Santee Canal N. Moultrie



This map corresponds with route directions numbered 1 - 5, and 8.


On Map Pages:

Using your phone (or touch-screen enabled device), tap any of the route numbers to bring up a map of the exact location!



Route - Santee Canal N. Moultrie

Route Directions

1	From the boat ramp at Angel's Landing Marina, turn left, heading in a northeast direction.
	LOOK →  Click on individual route directions to bring up map of exact location!
2	At 0.1 mile, pass by island of tall grass. It's best to pass on the left side, closest to the mainland. Continue in slight northeast direction.
3	Pass by tip of island at 0.6 miles. Begin to even more northeastern direction towards another large island 0.3 mile away.
4	At 0.9 mile, paddle around southern tip of island, head into center of bay, paddling towards upper right corner of bay. This is where the canal opening is located.
5	Enter Santee Canal at 1.4 miles. This is a narrow, shallow waterway (no more than 20 yards wide and maintains a depth of 4-5 feet). Enjoy the calm waters of the Santee Canal. Keep an eye out for wildlife, including alligators, deer, wild boar and a variety of waterfowl.
6	Come to railroad crossing over the canal at 2.8 miles. The canal will begin to narrow shortly after the railroad crossing.
7	At 3.2 miles, come to the obvious end of the canal. Return the same way you came.
8	Option. Turn a hard left when leaving the canal and head into a field of lilies. This is picturesque and worth the extra 20-30 minutes, particularly when everything is in bloom!

On Route Direction Pages:

Tap anywhere in the individual direction boxes to bring up a map of the exact location!

Wambaw Creek



17



It's always all smiles on quiet, beautiful Wambaw Creek.

Summary

Wambaw Creek is a pretty black water tidal creek located in the Francis Marion National Forest. It meanders the Wambaw Creek Wilderness. There are two landings that provide access to the creek. You can stage two vehicles or paddle up in one direction and return to your put-in landing. There are many large, beautiful cypress trees along the banks. Camping is permitted at the Elmwood Recreation Area.

Difficulty

Easy

Distance

4.6 miles one-way

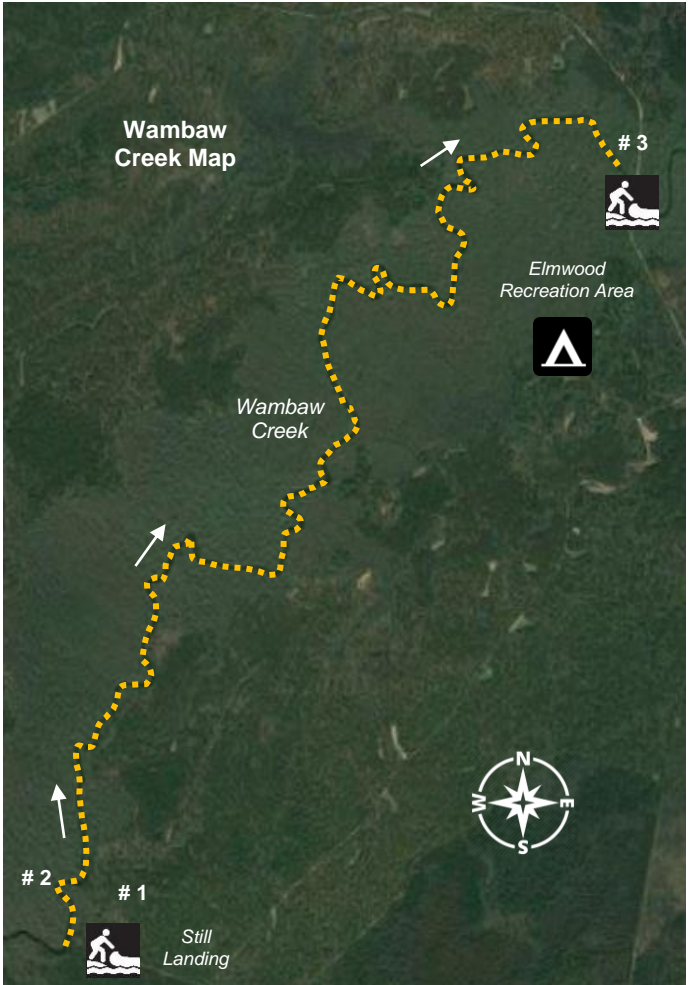
Time

2 - 4 hours

Crowds	Light
Boat Type	Kayaks or canoes 10-feet or longer. Paddle boards are not recommended.

You can stage 2 vehicles or do an “up & back” paddle

Put In	Wambaw Creek-Still Landing, FR 211-B, Mill Branch Road, McClellanville, SC 29458. GPS: 33.177449, -79.496577 33°10'38.8"N, 79°29'47.7"W
Take Out	Elmwood Recreation Area, Echaw Road, Jamestown, SC 29453. GPS: 33.207819, -79.468563 33°12'28.2"N, 79°28'06.8"W
Fees/Permits	None
Current	Flows in northeast direction.
Tidal Influence	Yes, tide is approximately 2 hours behind Charleston Harbor tide table.
Precautions:	Log jams and portages after heavy storms. Wasp nests could be in low lying branches. It's advisable to wear bright orange during hunting season in the Francis Marion National Forest.



This map corresponds with route directions numbered 1 - 3 on page 6.

Route Directions - see map on page 5	
1	<p>Note: this can be paddled from either landing, and it's short enough that you can paddle both directions in a morning or afternoon. For the purposes of this guide, the route directions are from Still Landing.</p> <p>From the boat ramp, turn right, heading downstream in a northeast direction.</p>
2	<p>Just 500-ft. into your paddle, the creek bears left in a "C-curve." During times of highwater, this area could become a small oxbow lake. Keep this in mind. Over the next 3 miles, there are similar shaped turns in the creek that could do the same. Even if this occurs, the creek is easy to follow.</p> <p>Throughout your paddle, the primary growth on the higher ground is loblolly pine and the creek itself is lined with beautiful, and sometimes strange, cypress trees.</p>
3	<p>At 4.6 miles, arrive at the Elmwood Recreation Area Landing.</p>



*Want a peaceful paddle? There's no stress on Wambaw Creek!
Note: Wearing a PFD (life jacket) is always recommended.*



Great Egret snagging some lunch on Wambaw Creek.