



Blueway # 23

Old Santee Canal Park

www.BerkeleyOutdoorLife.com





Convenient Functionality Built into This Guide

Map 1 of 2 - Santee Canal N. Moultrie



This map corresponds with route directions numbered 1 - 5, and 8.


On Map Pages:

Using your phone (or touch-screen enabled device), tap any of the route numbers to bring up a map of the exact location!



Route - Santee Canal N. Moultrie

Route Directions

1	From the boat ramp at Angel's Landing Marina, turn left, heading in a northeast direction. LOOK →  Click on individual route directions to bring up map of exact location!
2	At 0.1 mile, pass by island of tall grass. It's best to pass on the left side, closest to the mainland. Continue in slight northeast direction.
3	Pass by tip of island at 0.6 miles. Begin to even more northeastern direction towards another large island 0.3 mile away.
4	At 0.9 mile, paddle around southern tip of island, head into center of bay, paddling towards upper right corner of bay. This is where the canal opening is located.
5	Enter Santee Canal at 1.4 miles. This is a narrow, shallow waterway (no more than 20 yards wide and maintains a depth of 4-5 feet). Enjoy the calm waters of the Santee Canal. Keep an eye out for wildlife, including alligators, deer, wild boar and a variety of waterfowl.
6	Come to railroad crossing over the canal at 2.8 miles. The canal will begin to narrow shortly after the railroad crossing.
7	At 3.2 miles, come to the obvious end of the canal. Return the same way you came.
8	Option. Turn a hard left when leaving the canal and head into a field of lilies. This is picturesque and worth the extra 20-30 minutes, particularly when everything is in bloom!

On Route Direction Pages:

Tap anywhere in the individual direction boxes to bring up a map of the exact location!

Old Santee Canal Park



23



This is an easy-going, fun and relaxing paddle for any skill level!

Summary

This paddle trail is located entirely within the boundaries of the Old Santee Canal Park on Biggin Creek. It's an excellent opportunity for beginner paddlers to enjoy a few hours of kayaking or canoeing. Rental canoes are available at the park for a modest fee. You'll see cypress trees, swamp-like habitats, flowering aquatic plants, wading birds and maybe even a deer on the banks.

Difficulty

Easy and highly recommended for all skill levels!

Distance

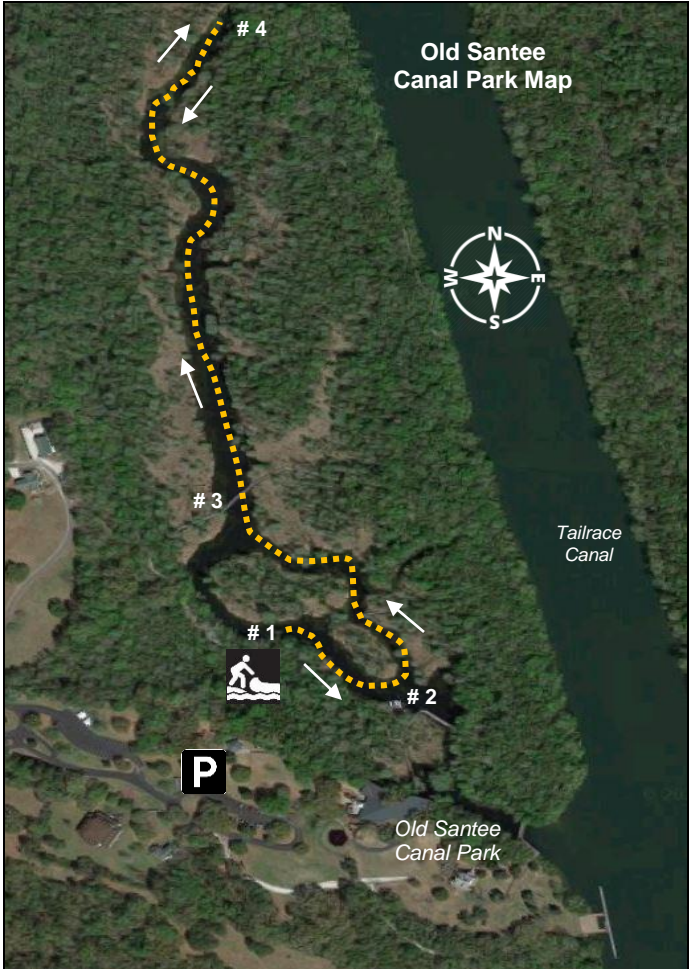
3 miles, roundtrip, loop trail.

Time

2 - 2.5 hours; however, take your time, take lots of family photos and enjoy this gem in the middle of Moncks Corner.

An enjoyable paddling adventure for the entire family!

Crowds	Light to moderate. On the weekends, you'll probably see a few other groups with rental canoes.
Boat Type	Any kayak or canoe, however, under 15-ft is best because the canal narrows quite a bit in places.
Put In / Take Out	900 Stony Landing Road, Moncks Corner, SC 29461. 843-899-5200, oldsantee canal park.org. GPS: 33.194924, -79.971907 33°11'41.7"N, 79°58'18.9"W Note: The GPS coordinates are for the actual boat ramp if bringing your own kayak/canoe. Driving across a grass field and through the woods on a narrow dirt road is required. It's best to ask the front gate staff for directions.
Fees/Permits	\$3 adults, \$2 senior citizens, children under 6 FREE. (as of Fall 2018.)
Current	Negligible.
Tidal Influence	None.
Precautions:	There could be low hanging branches and tight places to squeeze your boat after storms; however, the park staff is good at cleaning up this type of debris.



This map corresponds with route directions numbered 1 - 4 on page 6.

Route Directions - see map on page 5	
1	<p>If bringing your own kayak/canoe, obtain detailed directions on the boat ramp location (it can be confusing; you must drive across a grass field and then down a steep, narrow dirt road through the woods).</p> <p>If renting a canoe, go see the friendly folks at the Interpretative Center, and start at step # 2 below.</p> <p>From the small boat ramp, begin your paddle by turning right in Biggin Creek.</p>
2	<p>At 0.1 mile, reach the dock and rental canoe area. Continue left around the marsh following the creek, heading north. This general area is beautiful with towering cypress trees with hanging moss.</p>
3	<p>Go under a beautiful boardwalk bridge at 0.3 mile. Continue straight in Biggin Creek. Over the next 0.3 mile, the creek is over 120-ft. wide, lined with beautiful cypress, and you're likely to see egrets and herons.</p>
4	<p>At 0.6 mile, the creek narrows to 10 - 12 feet for the next 450-ft. This is an intimate, completely shaded paddle and part of the old canal. Pass under another foot bridge (labeled "6").</p> <p>The paddle trail continues through the old canal for the next 0.8 miles, narrowing again, and then widening to 30 - 50 feet. Continue in the canal until you cannot paddle any further.</p> <p>Return the same way you came.</p>



Paddling under one of the bridges on Biggin Creek.



Old Santee Canal Park is a great place for large groups of paddlers.