



Blueway # 15

# Lower Wadboo Creek

[www.BerkeleyOutdoorLife.com](http://www.BerkeleyOutdoorLife.com)





# Convenient Functionality Built into This Guide

Map 1 of 2 - Santee Canal N. Moultrie




This map corresponds with route directions numbered 1 - 5, and 8.

## On Map Pages:

Using your phone (or touch-screen enabled device), tap any of the route numbers to bring up a map of the exact location!



Route - Santee Canal N. Moultrie

Route Directions	
1	From the boat ramp at Angel's Landing Marina, turn left, heading in a northeast direction. <b>LOOK →</b>  <b>Click on individual route directions to bring up map of exact location!</b>
2	At 0.1 mile, pass by island of tall grass. It's best to pass on the left side, closest to the mainland. Continue in slight northeast direction.
3	Pass by tip of island at 0.6 miles. Begin to even more northeastern direction towards another large island 0.3 mile away.
4	At 0.9 mile, paddle around southern tip of island, head into center of bay, paddling towards upper right corner of bay. This is where the canal opening is located.
5	Enter Santee Canal at 1.4 miles. This is a narrow, shallow waterway (no more than 20 yards wide and maintains a depth of 4-5 feet). Enjoy the calm waters of the Santee Canal. Keep an eye out for wildlife, including alligators, deer, wild boar and a variety of waterfowl.
6	Come to railroad crossing over the canal at 2.8 miles. The canal will begin to narrow shortly after the railroad crossing.
7	At 3.2 miles, come to the obvious end of the canal. <b>Return the same way you came.</b>
8	Option. Turn a hard left when leaving the canal and head into a field of lilies. This is picturesque and worth the extra 20-30 minutes, particularly when everything is in bloom!

## On Route Direction Pages:

Tap anywhere in the individual direction boxes to bring up a map of the exact location!

# Lower Wadboo Creek



# 15



*It's all smiles on the Lower Wadboo Creek.*

## Summary

On the map, this looks like a wide, winding creek that leads to the Tailrace Canal, but it's so much more than that! The Lower Wadboo Creek includes beautiful flora, inlets and tributaries that include swamp-like habitats and a chance to see birds of prey. Don't underestimate the tidal influence, it can test the strongest paddlers!

## Difficulty

Moderate. The biggest consideration is the tidal influence from the Tailrace Canal (Cooper River).

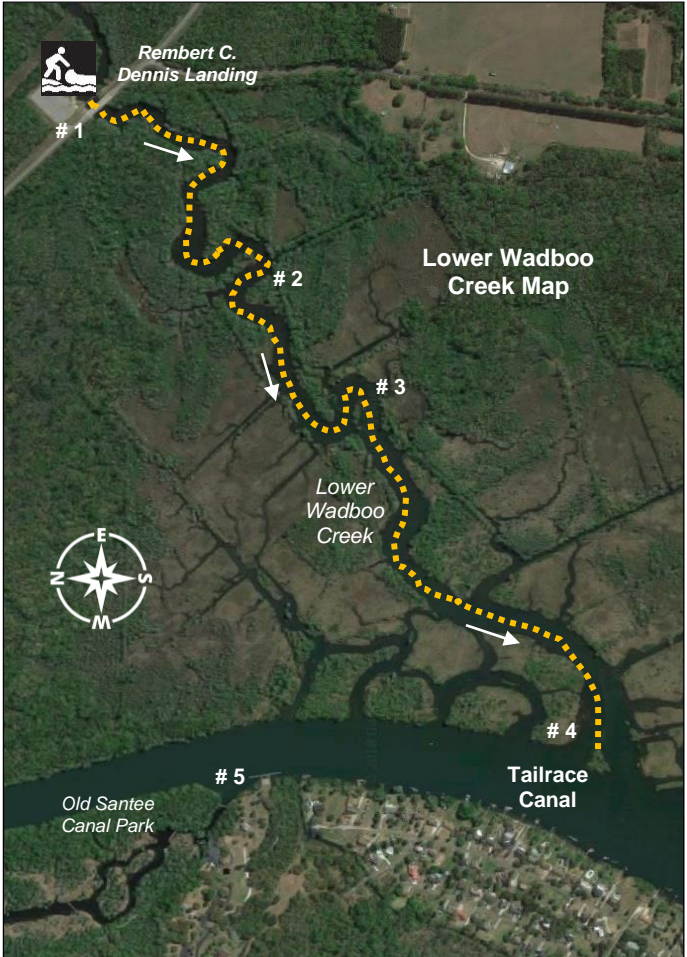
## Distance

3 - 4 miles, varies. Best suited as exploration of inlets and Tailrace Canal.

## Time

2 - 3 hours

<b>Crowds</b>	Moderate. There are almost always boaters zipping up and down the wide creek.
<b>Boat Type</b>	Kayaks or canoes 12-feet or longer. Paddle boards are not recommended.
<b>Put In / Take Out</b>	Rembert C. Dennis Landing, 1400 SC HWY 402, Moncks Corner, SC 29461.  GPS: 33.195955, -79.953198 33°11'45.4"N, 79°57'11.5"W  <u>Directions:</u> All GPS and mapping applications recognize this address.
<b>Fees/Permits</b>	None
<b>Current</b>	Flows west in the direction of the Tailrace Canal, however the tidal influence is a larger factor.
<b>Tidal Influence</b>	Yes, can be strong at times if paddling against the tide. Approximately 3 hours behind Charleston Harbor tide table.
<b>Precautions:</b>	Motorized boats go up and down the Lower Wadboo all day long. Most boaters will slow down and yield to paddlers but keep a watchful eye.



This map corresponds with route directions numbered 1 - 5 on page 6.

## Route – Lower Wadboo Creek

Route Directions - see map on page 5	
1	From the Rembert C. Dennis Landing boat ramp, turn right, paddling under the HWY 402 bridge. Immediately after the bridge, the flora changes with beautiful water lilies on the right.
2	This paddle is full of small inlets from the creek, to flooded 19 <sup>th</sup> century rice fields. At 0.5 mile, pass a small island (might look more like a peninsula depending on water level) in an S-curve. Just beyond the island on the left is a small access stream that leads back to a beautiful cypress swamp.
3	At 1.0 mile, there is another small stream to the left that goes back into a marsh and wooded area. This is a fantastic spot to fish for large bluegills and redbreast.
4	Reach the Tailrace Canal at 1.5 miles. In addition to these route directions, there are literally dozens of small inlets, streams and tributaries to see along the Wadboo Creek. Suggestion: take your time returning to the boat ramp and explore these areas.  <b>Return the same way you came.</b>
5	<u>Option:</u> For strong paddlers only. There can be a strong current and high-speed boats. At the Tailrace Canal, turn right/north and paddle 0.4 mile to the Old Santee Canal Park that's on the west side of the river. There is a dock that you can rest and get out of your boat. If you decide to explore the park, please visit the Interpretative Center up the hill and pay for admission.



*Aerial view of kayaks on Lower Wadboo Creek.*



*At the Rembert C. Dennis Landing. Heading out for some fun!*