



Blueway # 21

# Durham Creek / Back River

[www.BerkeleyOutdoorLife.com](http://www.BerkeleyOutdoorLife.com)





# Convenient Functionality Built into This Guide

Map 1 of 2 - Santee Canal N. Moultrie



This map corresponds with route directions numbered 1 - 5, and 8.


## On Map Pages:

Using your phone (or touch-screen enabled device), tap any of the route numbers to bring up a map of the exact location!



Route - Santee Canal N. Moultrie

### Route Directions

1	From the boat ramp at Angel's Landing Marina, turn left, heading in a northeast direction. <b>LOOK →</b>  <b>Click on individual route directions to bring up map of exact location!</b>
2	At 0.1 mile, pass by island of tall grass. It's best to pass on the left side, closest to the mainland. Continue in slight northeast direction.
3	Pass by tip of island at 0.6 miles. Begin to turn even more northeastern direction towards another large island 0.3 mile away.
4	At 0.9 mile, paddle around southern tip of island, head into center of bay, paddling towards upper right corner of bay. This is where the canal opening is located.
5	Enter Santee Canal at 1.4 miles. This is a narrow, shallow waterway (no more than 20 yards wide and maintains a depth of 4-5 feet). Enjoy the calm waters of the Santee Canal. Keep an eye out for wildlife, including alligators, deer, wild boar and a variety of waterfowl.
6	Come to railroad crossing over the canal at 2.8 miles. The canal will begin to narrow shortly after the railroad crossing.
7	At 3.2 miles, come to the obvious end of the canal. <b>Return the same way you came.</b>
8	Option. Turn a hard left when leaving the canal and head into a field of lilies. This is picturesque and worth the extra 20-30 minutes, particularly when everything is in bloom!

## On Route Direction Pages:

Tap anywhere in the individual direction boxes to bring up a map of the exact location!

## Durham Creek / Back River



# 21



*You'll paddle narrow waters with mixed vegetation on the upper Back River.*

### Summary

The Back River is accessed from Durham Creek near Cypress Gardens. You'll paddle beside tall grasses, and forestation that is a mix of pine, cypress, sweet gum, hardwoods, red cedar and river birch. In warmer months, the banks are lined with flowering water lilies. The waterway is home to wood ducks, herons, anhingas, and osprey. On the upper creek, you may even spot a white tailed deer.

### Difficulty

Moderate, only due to distance

### Distance

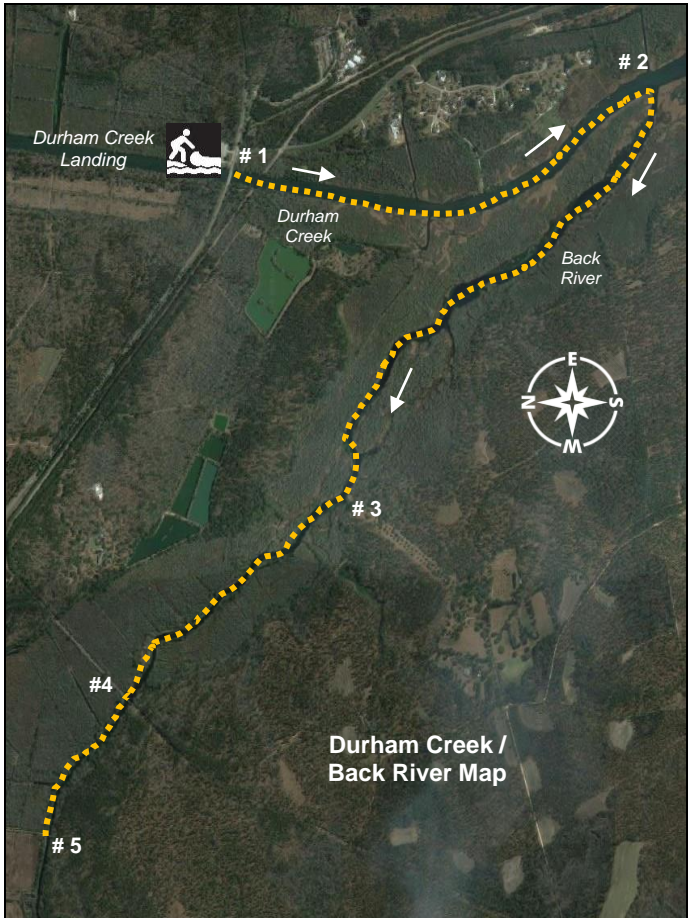
7.8 miles, round-trip

### Time

3 - 4 hours

***Paddle a seldom visited small tidal creek and river***

<b>Crowds</b>	Light. You're almost guaranteed to see boaters/anglers in Durham Creek, but the Back River is not frequented.
<b>Boat Type</b>	Kayaks or canoes 10 feet or longer. Paddle boards are not recommended.
<b>Put In / Take Out</b>	Durham Creek Landing (note: some mapping/GPS applications call this "Cypress Gardens Boat Ramp"), 3000 Cypress Gardens Road, Moncks Corner, SC 29461.  GPS: 33.057584, -79.957782 33°03'27.3"N, 79°57'28.0"W
<b>Fees/Permits</b>	None
<b>Current</b>	Negligible, generally south direction
<b>Tidal Influence</b>	Yes, tide is approximately 1.5 hours behind Charleston Harbor tide table
<b>Precautions:</b>	Motorized boats go up and down Durham Creek. Most boaters will slow down and yield to paddlers, but keep a watchful eye.



This map corresponds with route directions numbered 1 - 5 on page 6.

<b>Route Directions - see map on page 5</b>	
<b>1</b>	From the Durham Creek Landing boat ramp, turn left to begin paddling down the creek. In 200-ft., pass under bridge. In 500 more feet, pass under a railroad trestle.
<b>2</b>	At 1.3 miles, turn right into wide Back River. The river will consist of tall grasses and marshland.
<b>3</b>	1.4 miles up the river (at 2.7 miles total), you will come to a well-manicured clearing on your left with a floating dock. This is Medway Plantation. It consisted of 12,000 acres that has history back to the 1680s. Fort Sumter was built using bricks produced at this plantation.  <u>Note:</u> Medway Plantation is private property. No trespassing.
<b>4</b>	Pass under a railroad trestle at 3.6 miles.
<b>5</b>	At 3.9 miles, come to a wooden bridge.  <u>Note:</u> At the time of writing this guidebook in late 2018, recent storms have blown down part of this bridge and there is massive debris blocking further passage. Since the creek becomes narrow and very shallow past this point, there are no plans to clear this blockage.  <b>Return the same way you came.</b>



*Beautiful Spider Lilies in the tall grasses of the Back River.*



*Louisiana (also known as "Little Blue") Heron on the Back River.*